

Durchführungstüllen DO mit Langloch

Material: Weich-PVC (Temperatur: -30 bis +70°C)

Material: TPE, UL94-HB (Temperatur: -50 bis +125°C)

(Materialeigenschaften siehe Anhang)

Farbe: schwarz, grau

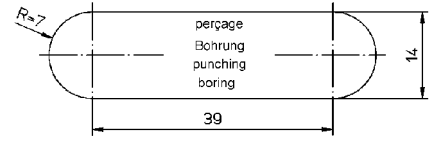
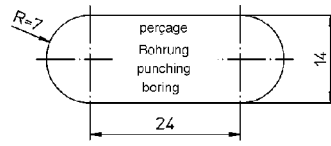
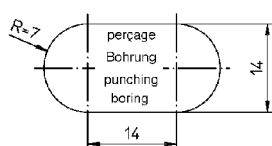
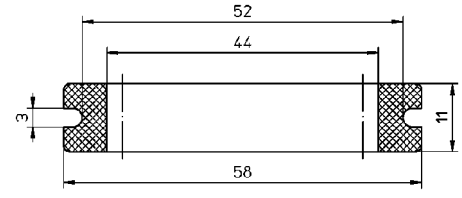
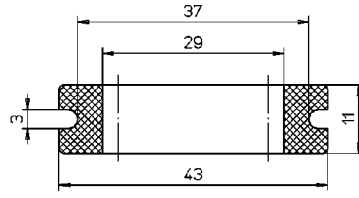
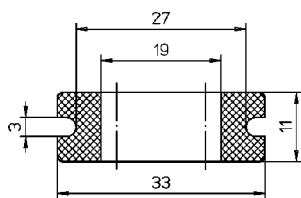
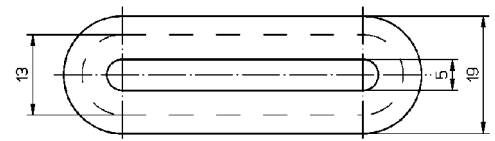
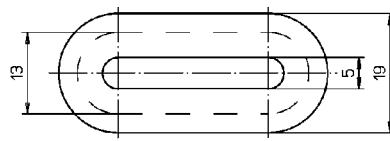
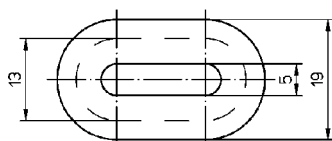
Farbe: schwarz

Typ DO zum Schutz von Rund- und Flachkabeln

Farbe: grau

Farbe: schwarz

Art.-Nr.	Typ	VPE	Art.-Nr.	Typ	VPE
54-201	DO-PVC 19/27/33/3 grau	100	54-204	DO-PVC 19/27/33/3 schwarz	100
54-202	DO-PVC 29/37/43/3 grau	100	54-205	DO-PVC 29/37/43/3 schwarz	100
54-203	DO-PVC 44/52/58/3 grau	100	54-206	DO-PVC 44/52/58/3 schwarz	100
			53-204	DO-TPE 19/27/33/3 schwarz	100
			53-205	DO-TPE 29/37/43/3 schwarz	100
			53-206	DO-TPE 44/52/58/3 schwarz	100



DO 19/27/33/3

DO 29/37/43/3

DO 44/52/58/3