

Schutzkappen SKA

Material: Polychloropren Gummi
Temperatur: -30 bis +90°C

Farbe: schwarz:
(Materialspezifikation auf Anfrage)

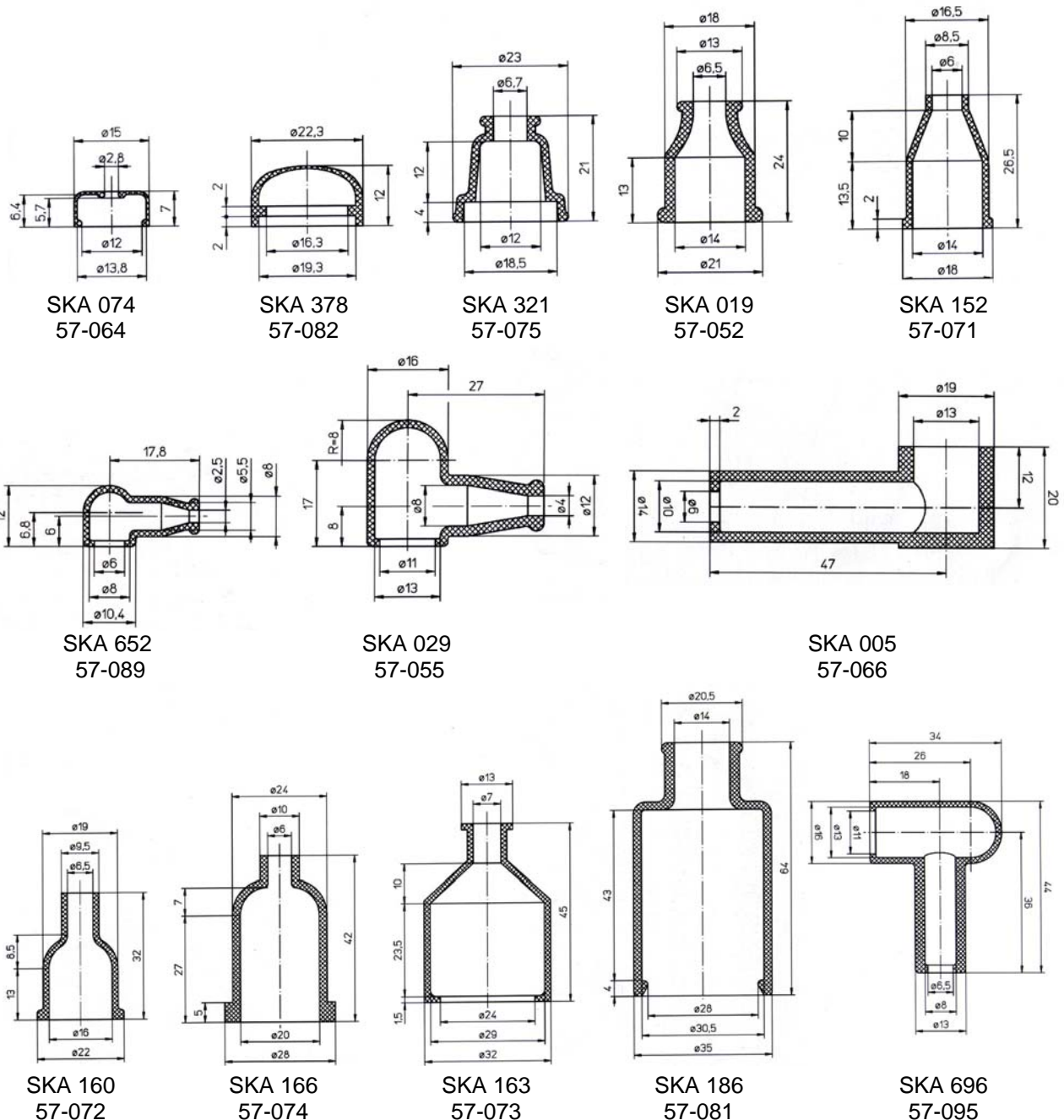
Typ	Art.-Nr.	VPE
SKA 005	57-066	50
SKA 019	57-052	100
SKA 024	57-053	25
SKA 028	57-078	25
SKA 029	57-055	50
SKA 074	57-064	100
SKA 086	57-059	25
SKA 051	57-008	100

Typ	Art.-Nr.	VPE
SKA 087	57-060	50
SKA 152	57-071	10
SKA 160	57-072	100
SKA 163	57-073	50
SKA 166	57-074	50
SKA 186*	57-081	25
SKA 321	57-075	100

Typ	Art.-Nr.	VPE
SKA 378**	57-082	100
SKA 634	57-085	25
SKA 652	57-089	100
SKA 683	57-092	25
SKA 684	57-093	25
SKA 696	57-095	50
SKA 749	57-097	25

* Nitrile Gummi

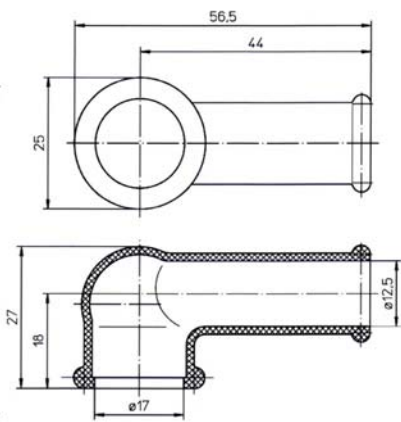
** EPDM Gummi



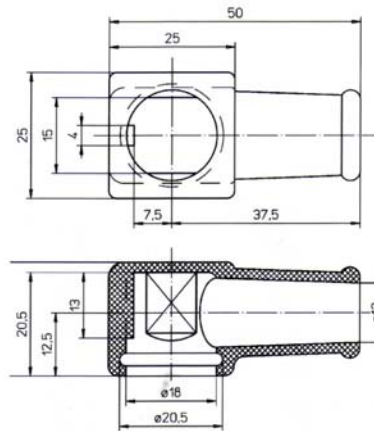
Schutzkappen SKA

Material: Polychloropren Gummi
Temperatur: -30 bis +90°C

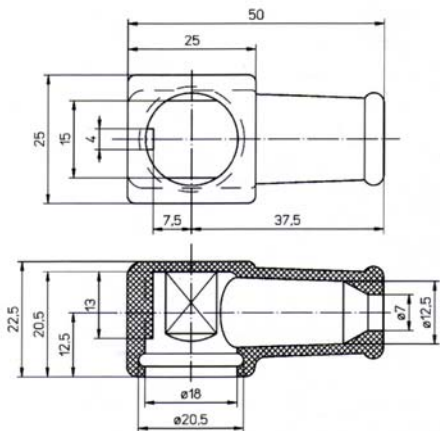
Farbe: schwarz:
(Materialspezifikation auf Anfrage)



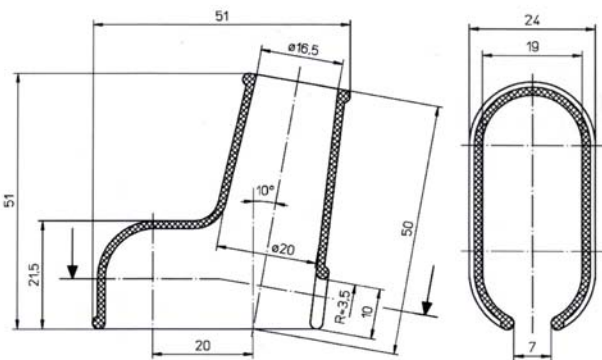
SKA 749
57-097



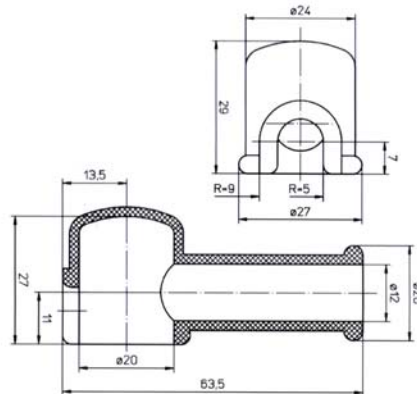
SKA 683
57-092



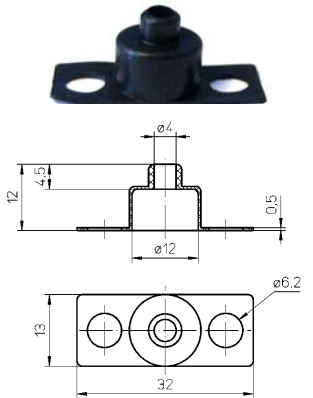
SKA 684
57-093



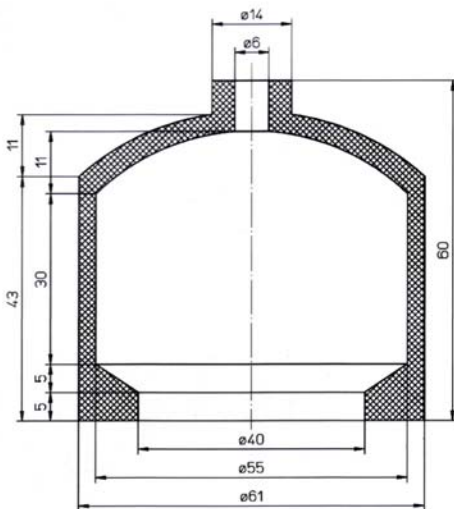
SKA 087
57-060



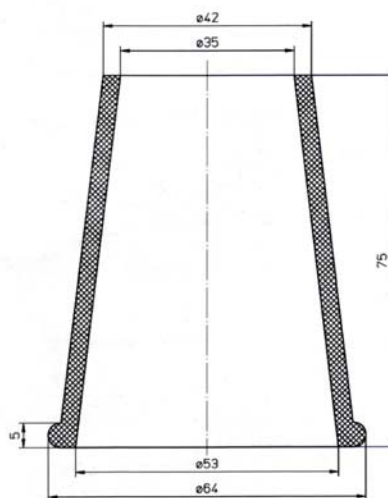
SKA 086
57-059



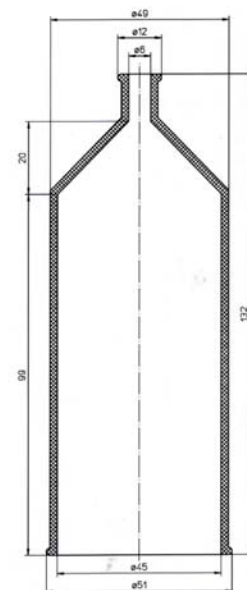
SKA 051
57-008



SKA 028
57-078



SKA 024
57-053



SKA 634
57-085